

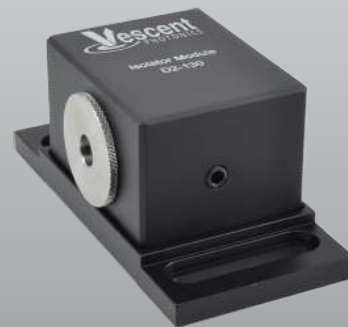
D2-120 Fiber-Coupling Module

D2-130 Isolator Module

The D2-120 is designed to facilitate coupling of a laser beam into either a single or multimode optical fiber. The module incorporates an optical isolator, prior to the fiber facet to reduce optical feedback. An FC fiber receptacle is provided with an aspheric AR-coated condensing lens and six degrees of freedom for alignment optimization: 3 linear (x, y, z), 2 angular (azimuth, elevation), and 1 rotational (for PM fibers). The incoming beam height matches other D2 series lasers and optical modules.



D2-120 Fiber-Coupling Module



D2-130 Isolator Module

The D2-130 isolator module contains a 35 dB isolator and 1/2-waveplate in a rugged and compact package. The beam height matches other D2-series modules. The D2-130 can be used whenever extra isolation is desired, such as added isolation prior to fiber coupling.

Features:

- Easily couple light into single mode (PM or SM) or multimode fiber
- ≥ 30 dB of isolation
- Rotatable waveplate precisely aligns polarization with fiber axis (PM)
- Beam height matches D2-100 Laser

D2-120 & D2-130

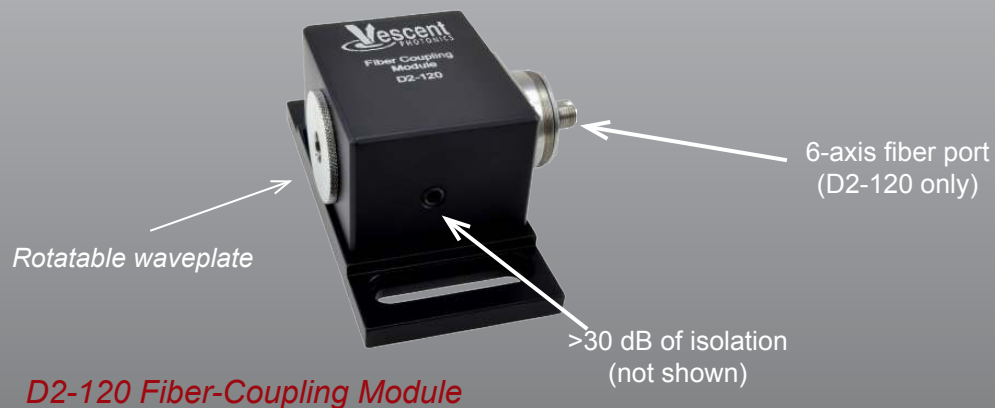
Performance Specifications

Performance ¹	
Wavelength	760, 767, 770, 780, 785, 795, 808, 838, 852, 895, 935, 1064, 1083, 1092 nm
Isolation ²	>30 dB
Fiber-Coupling Efficiency ³ of D2-120	>50% typical

¹All specifications subject to change without notice.

²Except D2-120-NI which has no isolator.

³With D2-100. Lasers with low M^2 will couple more efficiently than those with higher M^2 .



Vescent Photonics, LLC
 6770 W. 52nd Ave., Suite B
 Arvada, CO 80002
 USA
 +1 (303) 296-6766
www.vescent.com

Designed to integrate with D2-100. Also works easily with third-party lasers.

