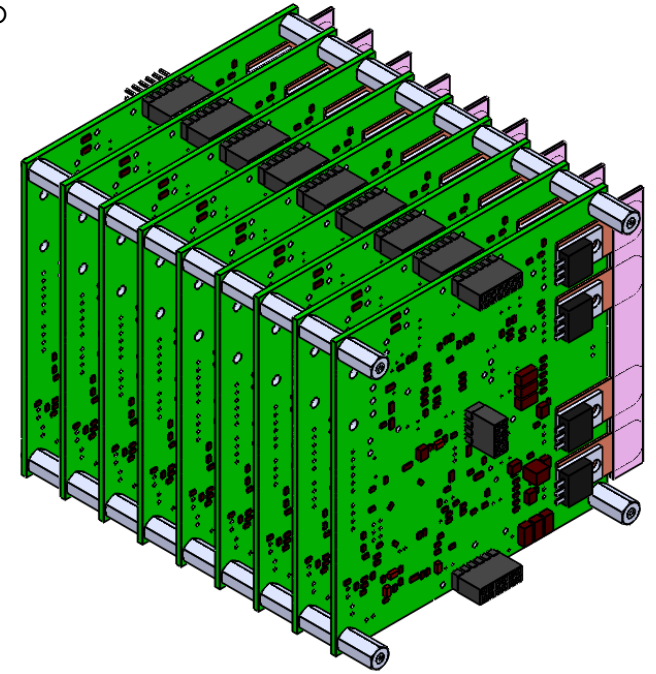
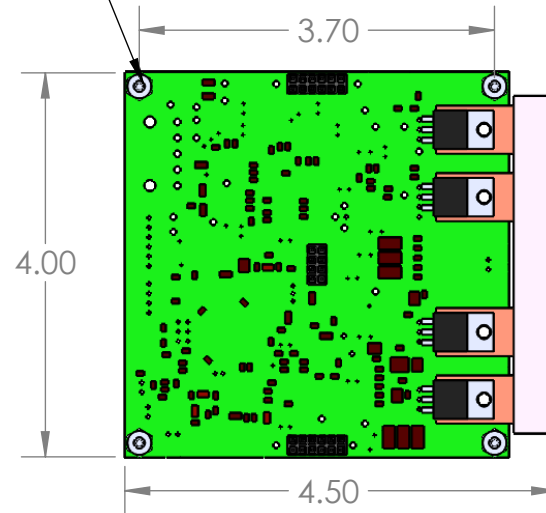
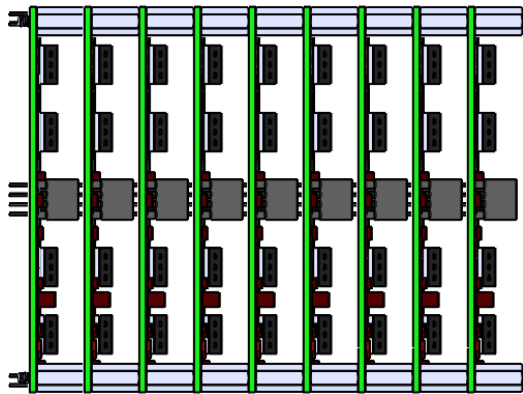


The 'pitch' of the stack, i.e. the thickness of one board plus the standoff is 0.5700"



4-40 x 0.5" Stand-Offs
 PCB has holes for 4-40 Screws
 The bolt pattern is square
 PCB is square



PROPRIETARY AND CONFIDENTIAL
 THE INFORMATION CONTAINED IN THIS DRAWING IS THE SOLE PROPERTY OF VESCENT PHOTONICS, INC. ANY REPRODUCTION IN PART OR AS A WHOLE WITHOUT THE WRITTEN PERMISSION OF VESCENT PHOTONICS, INC. IS PROHIBITED.

		UNLESS OTHERWISE SPECIFIED:	NAME	DATE	TITLE: ICE OEM Board Stack
			DRAWN		
			CHECKED		
			ENG APPR.		
		INTERPRET GEOMETRIC TOLERANCING PER:	Q.A.		SIZE DWG. NO. REV
		MATERIAL	COMMENTS: Unless otherwise specified: Break Edges (0.005" 45° or similar is OK) No Sharp Corners		
NEXT ASSY	USED ON	FINISH			SCALE: 1:4 WEIGHT: SHEET 1 OF 1
APPLICATION		DO NOT SCALE DRAWING			