

## Master and Control Board

Model No. ICE-MC1

Document Revision: 1.0

Document Last Updated on 2021/08/26 14:26

Please read [Limited Warranty](#) and [General Warnings and Cautions](#) prior to operating the ICE-MC1.

## Description

The Master and Control Board processes communication between individual ICE boards and external devices. It translates serial text commands into binary commands sent to the proper ICE board. It also distributes power to individual ICE boards, properly sequencing power to the boards and has power safety protection.

## Absolute Maximum Ratings

Note: All modules designed to be operated in laboratory environment

Parameter	Rating
Environmental Temperature	>15°C and <30°C
Environmental Humidity	<60%
Environmental Dew Points	<15°C

## Specifications

	ICE-MC1	Units
<b>Input Power Requirements</b>		
5V line	>5	A
15V line	>1.5	A
-15V line	>1.5	A
<b>Maximum Power Consumption<sup>1)</sup></b>		
5V line	10	A
15V line	3	A
-15V line	3	A
<b>Slave Boards</b>		
Max Number of Slave Boards	8	
<b>Communication Methods</b>		
I2C Bus		

	ICE-MC1	Units
<b>Input Power Requirements</b>		
<html> &nbsp;&nbsp;  </html> TTL Serial (3.3V)		

# I/O

*Only for OEM versions of the ICE-MC1 purchased without the ICE-Box*

The diagram below shows most of the pin definitions for the ICE-MC1.

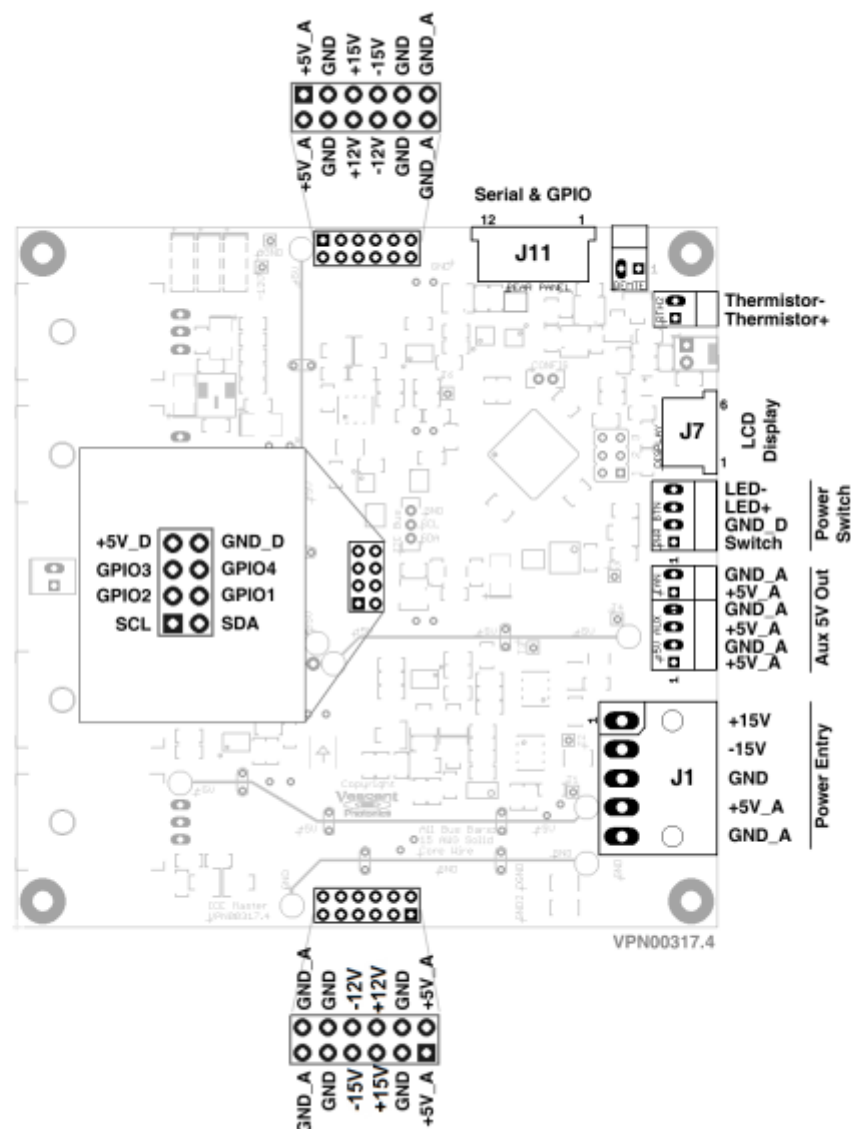


Fig. 1: ICE-MC1 Master and Control Board connector schematic for OEM integration.

## Power Entry Connector

Power is provided at J1 (Molex P/N: 0039303056). Pin definition shown in [figure 1](#). The return current path for +5V A is GND A. This wiring connected to this return path should be capable of carrying the

maximum current of the +5V\_A line. The signals GND and GND\_A are shorted together on the circuit board through a jumper, but this can be removed.

## Serial & GPIO Connector

Communication with the Master Controller and daughter modules is done through flat flex connector J11. This connector contains two USART bi-directional communication busses, event system GPIO pins, and a safety interlock signal. J11 is a 12-pin 1.00mm pitch flat flex connector (FCI SFW12R-1STE1LF) with a pin definition of:

Pin	Signal
1	3.3V (50mA max)
2	TXO_Serial1
3	RXI_Serial1
4	TXO_Serial2
5	RXI_Serial2
6	Ground
7	GPIO1
8	GPIO2
9	GPIO3
10	GPIO4
11	Ground
12	Safety Interlock

### Serial

This provides two independent asynchronous serial interfaces (USART) to communicate with the ICE-MC1. The serial interface operates at 3.3V signalling levels, 115200 Baud, '8N1' (8 bit, no parity, 1 stop bit). Bus idle state is high (3.3V). The comm (or serial) port to use will be chosen by the USB host computer. See [commands overview](#) page for usage of the serial port. One can be assigned to a USB↔Serial interface if desired. The TXO (transmit out) and RXI (receive in) nomenclature is from the perspective of the device external to the Master Controller. TXO is for an external device transmitting data into the ICE-MC1. RXI is for the ICE-MC1 sending data out to an external device. Either USART bus can be used to receive commands, but **not** simultaneously (e.g. interleaved bytes). In the [ICE Platform Enclosure](#), USART channel 1 is assigned to a USB↔Serial converter and USART channel 2 is assigned to an external connector for direct TTL serial control from an embedded system or DAC card.



Either USART bus can be used to receive commands, but **not** simultaneously (e.g. interleaved bytes).

## GPIO

The GPIO pins are used for event system signalling. Voltage signalling is at 3.3V, active low. Pin definitions and usage is detailed in the [Event System](#) section.

## Safety Interlock

The safety interlock signal prevents the Master Controller from releasing the safety interlocks on all attached daughter boards. The safety interlock is only applicable to daughter boards that have laser controllers. Without the safety interlocks released, daughter boards are prevented from powering on lasers. The safety interlock signal floats high to 3.3V and must be pulled down to ground with less than 1k $\Omega$  of impedance to release the interlocks. This pin can be permanently shorted directly to ground if safety interlock functionality is not required.



The safety interlock signal floats high to 3.3V and must be pulled down to ground to release the interlocks. This pin can safely be shorted directly to ground if safety interlock functionality is not required.

## REMOTE Supply Connector

This connector, located next to J11, is for internal enclosure use. It is used to send a power on signal to a remote power supply when the power switch is depressed. Consult Vescent for use of this connector.

## Thermistor Connector

A 10k NTC thermistor can be connected to this connector to enable the Master Controller to measure a case temperature. When temperature exceeds a set threshold, the Master Controller can shutdown power to the daughter boards.

## LCD Display

For internal use only.

## Power Switch

A momentary push button switch can be connected from SWITCH to GND\_D. Briefly pulling SWITCH to ground (for longer than 10 ms) will toggle power to the Master Controller and daughter boards. When powering down, the switch will wait 1 second before turning off power the the Master Controller, allowing the Master Controller time to safely shutdown all daughter boards. The default behavior is

that when power is applied to the Master Controller through the Power Entry connector, the board remains in a completely power off state (including the microcontroller on the Master Controller) and no serial commands will be acknowledged. The SWITCH signal must be pulled low to turn on the Master Controller, after which commands can be sent to power on or off the daughter boards. The LED+ and LED- signals can be connected to an LED to indicate power state. LED+ is connected 5V and LED- is connected through a 249 Ohm resistor and transistor to ground.



The power switch functionality and default power on behavior can be changed at the factory if these features are not needed.

## AUX 5V Out Connector

This connector provides 5V to high current devices. Some daughter boards will require more than 3A of current on the 5V rail, and these connectors allow point-to-point wiring of 5V to reduce voltage drop while drawing large currents (instead of through the system power bus).

## Internal Bus Headers

The Master Controller routes power and communications to daughter modules through a set of 3, 0.1" pitch pin headers located on either side of the board and in the middle. The Master Controller routes the raw 5V\_A, +15V, and -15V to these headers from the main power entry connector through power conditioning circuitry. The power conditioning circuitry consists of electronic fuses for protection against fast transients, reverse polarity protection, overvoltage and undervoltage detection, and overcurrent protection on each power rail. The Master Controller will clamp inrush current when power is applied to the daughter modules so that the main power supply feeding the power entry connector does not experience power sag during turn on. Should a fault condition occur on either the 5V, +15V, or -15V line, the Master Controller will shutdown all power rails safely. The +12V and -12V power rails are regulated from the 15V inputs on the Master Controller with low-dropout regulators. The center header, which contains 5V\_D power for digital circuitry, also carries the [Event System](#) GPIO lines and the global I2C communications bus (SDA and SCL).

## Quick Start Commands Guide

Please see [Overview of Commands and Basic Usage](#) and [Master Board CommandList](#) for more details. All serial commands that go to the ICE-CM1 are prefixed with a "#" and are routed to an individual slave board. For example, the command **#Devices** is a ICE-CM1 command that lists all the attached ICE slave boards and their address number. For example:

```
#Devices
```

```
Devices:
```

```
1: Temp Controller
```

```
2: None
3: Current & OPLS
4: Current & Peak Lock
5: None
6: Temp Controller
7: Current & Peak Lock
8: None
```

The **#Slave** command sets what device to talk to. In the above example, there is a Quad Temperature Controller (ICE-QT1) on slots 1 and 6. To tell the ICE-MC1 to communicate with the ICE-QT1 in slot 6, send the command:

```
#Slave 6
```

The **#Slave** command is persistent: all subsequent commands will be routed to the ICE-QT1 on slot 6 until the **#Slave** command is run again. At this point to query to temperature setpoint on the ICE-QT1's third temperature channel, send the command:

```
TempSet? 3
25.7
```

Because the command **TempSet** does not start with a "#", the ICE-MC1 knows that the command is for a slave board. So it converts the string "TempSet? 3" into binary and sends it over I<sub>2</sub>C bus to ICE-QT1 on slot 6. The ICE-QT1 sends binary data back to the ICE-MC1 and the ICE-MC1 converts into a string representing the temperature setpoint and sends "25.7" over the serial line.

1)

External power provided to ICE-MC1 must also be able to handle the current requirements to utilize maximum power consumption specification

From:  
<https://www.vescent.com/manuals/> - **Product Manuals**

Permanent link:  
<https://www.vescent.com/manuals/doku.php?id=ice:master&rev=1404238888>

Last update: **2021/08/26 14:26**

