

# ICE Box Quick Start Guide

Document Last Updated on 2021/11/23 22:00

Please read [Limited Warranty](#) and [General Warnings and Cautions](#) prior to operating the ICE Box.

## Links

Click here for specifications on the [ICE Box Card Chassis](#).

Click here for the [ICE GUI Installation](#).

Click here for the [ICE-QT1 Board](#).

Click here for the [ICE-CS1 Board](#).

Click here for the [ICE-QT1 Board API](#).

Click here for the [ICE-CS1 Board API](#).

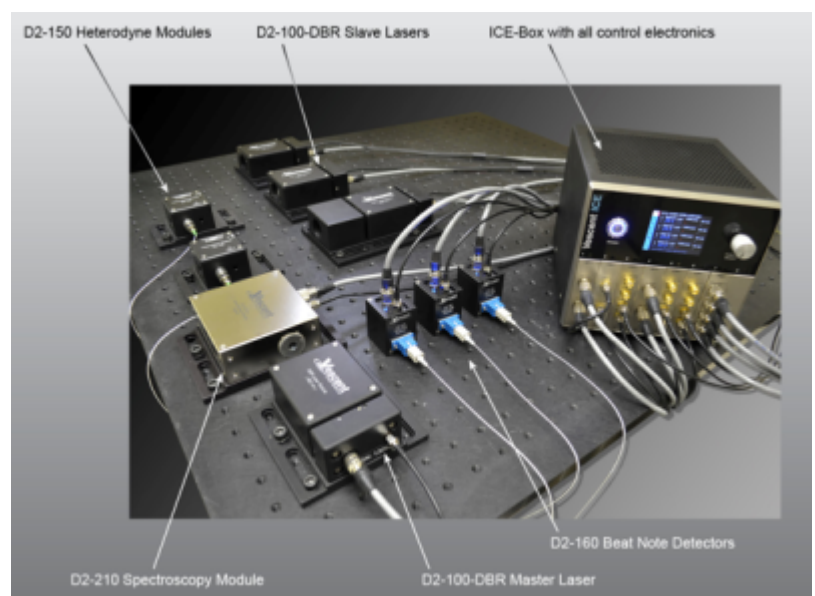
Click here for the [ICE-PB1 Board API](#).

Contact [sales \[at\] vescent \[dot\] com](mailto:sales@vescent.com) for questions and corrections, or to request added functionality.

## Description

The ICE (Integrated Control Electronics) box is a compact suite of digitally controlled electronics that will precisely drive and stabilize our D2-100 DBR lasers and an associated array of photonics tools. It will simplify your experimental design and reduce SWaP while still providing the same high performance we offer in our D2 modular units. The ICE-Box conveniently houses and interfaces up to eight ICE daughter boards plus the Master and Control board to allow integrated control over complex laser experiments. Easily control four lasers and more ([figure 1](#)) from a single device through serial commands, the front-panel, or a GUI.

Fig. 1: The ICE Box controlling an atom-locked 4 laser system in maser/slave configuration





## Overview

This guide will walk you through getting started with the ICE Box, setting up GUI controls, and locking a D2-100 DBR laser to spectroscopy using the ICE [CS1](#), [PB1](#), and [QT1](#) cards. Preparing and aligning the laser system associated with obtaining this lock will not be covered in this quick start guide, but information on doing so can be found [here](#). Further information on the functionality of individual ICE cards not covered in this guide can be found in their respective manuals (coming soon!).

## Purchase Includes

- ICE Box Integrated Control Electronics Card Chassis
- USB Type-B Cable
- Power Cable (if purchased with ICE PS2 Power Supply)
- All required connection cables for included ICE Cards.

## List of Symbols

	Warning. Pay special attention to procedures and notes.
	Potential for electrical hazard.

## Getting Started

After unpacking your ICE Box and [ICE PS2 Power Supply](#), you should begin by familiarizing yourself with the [connections](#) on the back of the box. The sections below will guide you through setting up the ICE Box, and obtaining a lock to spectroscopy using the ICE Box GUI. The laser system used in this example is a [D2-100](#) (780nm) DBR laser, and a [D2-210](#) (Rb) spectroscopy module.

## Powering on the ICE Box

To power on the ICE Box, connect the ICE PS2 power supply to a standard wall outlet, then connect the ICE Box with the included power supply cable. Toggling the rocker switch on the back of the ICE PS2 power supply will turn the power supply on, after which the front rocker switch can be toggled to

place the ICE system into standby mode. In standby mode, the ICE Box is not powered on, but can activate either by [serial API commands](#), or by pressing the circular power button on the front of the ICE Box. The four LEDs on the front of the ICE PS2 power supply indicate whether the ICE Box is in standby mode (top LED on), or receiving full power (bottom three LEDs on).

## Making Connections to a Laser System

The ICE-CS1 and ICE-QT1 boards each have two connections, and the ICE-PB1 board has four. Not all connectors on each card are used in the configuration described in this guide, but all connections on each card can be used at the same time. While the ICE Box is fully powered off, connect the Hirose temperature control of the D2-100 to the “Ch 1 & 2” Hirose connector on the ICE-QT1 card using an 8-pin Hirose cable. Attach an SMA cable to the “Laser Out” SMA on the ICE-CS1 card, then remove the 50Ω shorting cap from the D2-100 and connect the SMA cable. Finally, connect the top 6-pin Hirose power connector on the ICE-PB1 card to the power connector of the D2-210 spectroscopy module. Power on the ICE system. Descriptions of each card can be found below.

### ICE-QT1

On the ICE-QT1 board there are two 8-pin Hirose connectors labeled “Ch 1 & 2”, and “Ch 3 & 4” respectively. Each Hirose connector can control two TEC plants for a total of four plants per QT1 board. One ICE-QT1 board is able to temperature control two D2-100 lasers.



Fig. 2: The ICE QT1 Board

### ICE-CS1

On the ICE-CS1 board there are two SMA connectors: “Error In” and “Laser Out”. The “Error In” SMA takes the error signal from a photodetector such as the one in the D2-210, and the “Laser Out” SMA is for current controlling a laser diode such as the D2-100. Each D2-100 laser in your system needs its own ICE-CS1 or ICE-CP1 card to act as a current controller, depending on whether it's being locked to spectroscopy, or to a maser laser in an offset phase lock.



Fig. 3: The ICE CS1 Board

### ICE-PB1

The ICE-PB1 board has Four 6-pin Hirose power connectors. A table of the connectors pinout can be found [below](#). This ICE card is primarily used to power system auxiliaries, such as the D2-210 spectroscopy module, or the D2-260 beatnote detector. Each connector on the ICE-PB1 board can power one auxiliary device, allowing four devices per board.



Fig. 4: The ICE PB1 Board

## Installing and Using the ICE Control GUI

The ICE Control GUI can be found on our gethub page [here](#), and installed by scrolling to the bottom of the page and choosing between the three file formats. If you are using a Windows 10 machine, it will be easiest to download “ICE\_Control\_v1.2\_32bit.zip”, which includes an executable file. Once you have downloaded the .zip file, extract it to whichever directory will be most convenient to run an executable from. The executable must be left in the extracted folder, as it will have trouble finding some of its dependencies if you move it. It is important to note that you must both save the file (the Windows Default is to “Open” files), and also extract the file before the ICE Control GUI can be used. You will not be able to open the ICE Control GUI if you do not.



Fig. 5: The download page for the ICE Control GUI

Once you are finished downloading and unzipping, navigate to the extracted file and double click “ICE\_Control”, which should be an executable with the Vescent Logo as its icon. A blank command prompt window will appear, and the ICE Control GUI will take a minute or two to open. It is not necessary to type any commands into the command prompt window.

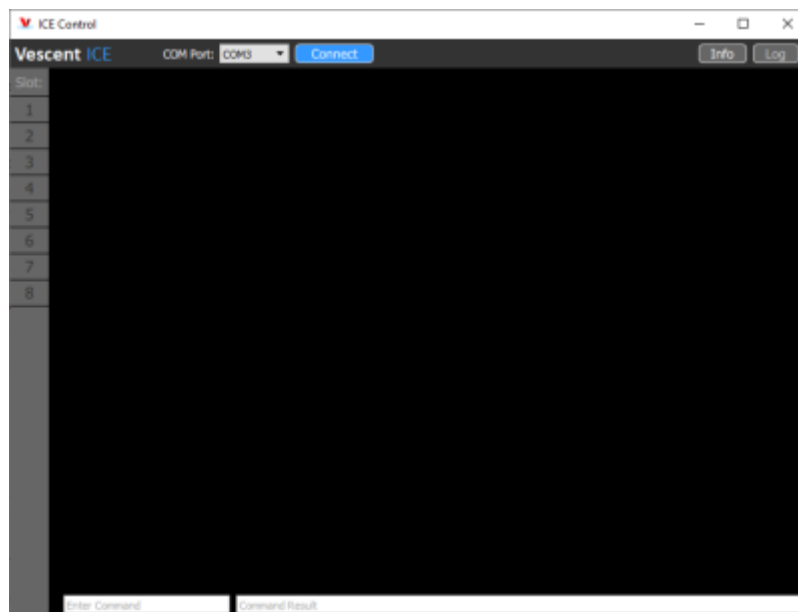


Fig. 6: The ICE Control GUI before Connecting to an ICE Box

Now that the ICE Control GUI is open, you must plug your powered on ICE Box into your computer using a USB Type-B to USB Type-A adapter, and determine which COM port was assigned to it. To find the ICE Box's COM port on Windows, type “Device Manager” into the search bar at the bottom of the screen, press enter, and then expand the “Ports (COM & LPT)” drop down menu (figure 7). Unplug the

USB cable from your ICE Box and watch the list of COM ports to see which one disappears. Plug your ICE Box back in and observe the new COM port device appear in the menu. The COM port of each device is listed in paranthesis at the end of each line. Select the correct COM port from the Drop Down menu in the ICE Control GUI and press "Connect".

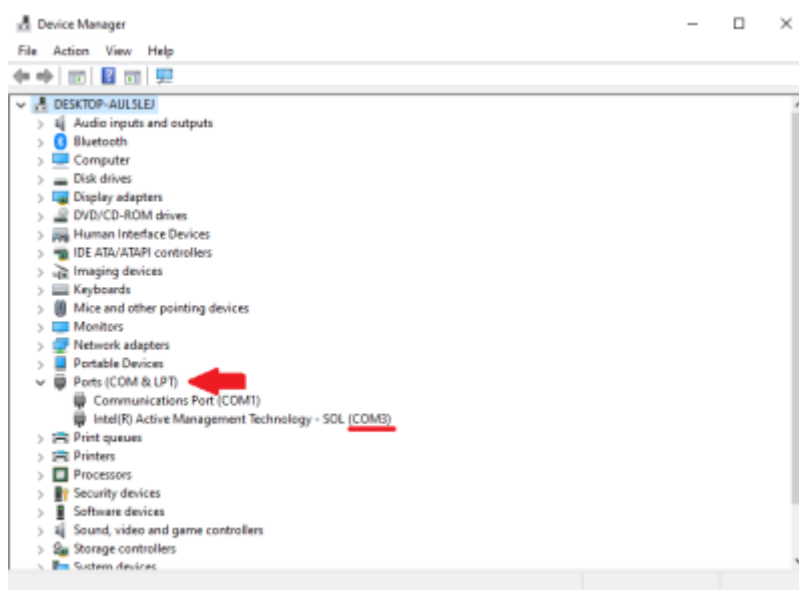


Fig. 7: Device Manager window highlighting the Ports drop down

The list of board slot numbers on the left hand side of the ICE Control GUI will illuminate, indicating which boards are installed. Boards can be selected from this list by clicking on the numbers to navigate to the control options for the corresponding ICE board.

## Locking a Laser to Spectroscopy

After making all the necessary connections you will need to find spectroscopy. This can be done by enabling the laser and setting the **Laser Current** to a value which gives the desired output power in the ICE-CS1 menu (see [figure 10](#)), and then modifying the setpoint temperature of the QT1 card. First ensure that the **T Min** and **T Max** temperatures are configured to safe values for your system, then click on the **TSet(C)** field to enter a new value with the keyboard. For the D2-100 it is recommended to set **Stage 1** (Top) to 25°C, and to keep **Stage 2** (Bottom) between 15°C and 30°C.



Fig. 8: QT1 GUI showing TSet(C) and T Min/T Max locations

If using a D2-100 DBR laser purchased from Vescent, refer to the documentation which came with the laser to find the approximate **Stage 2** setpoint. Once the desired value is entered, click the **Servo: Off/On** button to engage the temperature servo. The **Temp(C)** field displays the measured temperature of the thermal plant, and **TError(mK)** displays the difference between **TSet(C)** and **Temp(C)** while the values are within the range of the monitor. **TError(mK)** is plotted in the graph below.



Fig. 9: QT1 GUI showing engaged servo and live error graph

If your D2-100 documentation is unavailable, start by setting **Stage 2** to 15°C, engage the servo, then increase it 0.5°C at a time until spectroscopy is found or 30°C is reached. Assuming that **Ramp** is enabled, and the value of **Range** is non-zero, this should be a reliable method to find spectroscopy.



Fig. 10: Rb Spectroscopy (top) and Peak Lock Differential signal (bottom)

Once spectroscopy has been found, turn **Ramp** on and align the feature you want to lock to with the center line on the GUI plots. You can do this either by changing the **Laser Current** supplied to the diode, or by shifting the **Center** dial in the **Ramp** box. Turning **Range** up and down will make your ramp amplitude larger or smaller and show you more or less of your spectroscopy. Whatever is lined up with the center line on the plots is the feature the ICE Box will try to lock to. If you want to lock to a peak, align the top graph with the peak you want, and note that the bottom graph should be near the middle of a slope.



The intuitive thing to do is to center right on the feature you want, but you actually want to be a little bit offset from that. The ICE Box gives a slight kick when the servo is engaged, so if you're right on the center it will sometimes bump you over to the next peak. It doesn't matter which side you offset from (a little right or left will be fine) as long as you're still on the correct slope. It will always kick towards the center of the selected slope. It is recommend to aim for a roughly 5% offset from center when aligning the feature you wish to lock to.





Fig. 11: TEXT

Engage the **Servo** button and watch the signals. The top graph should go to a value that corresponds to the feature you were trying to lock to, and the bottom graph should go to zero.

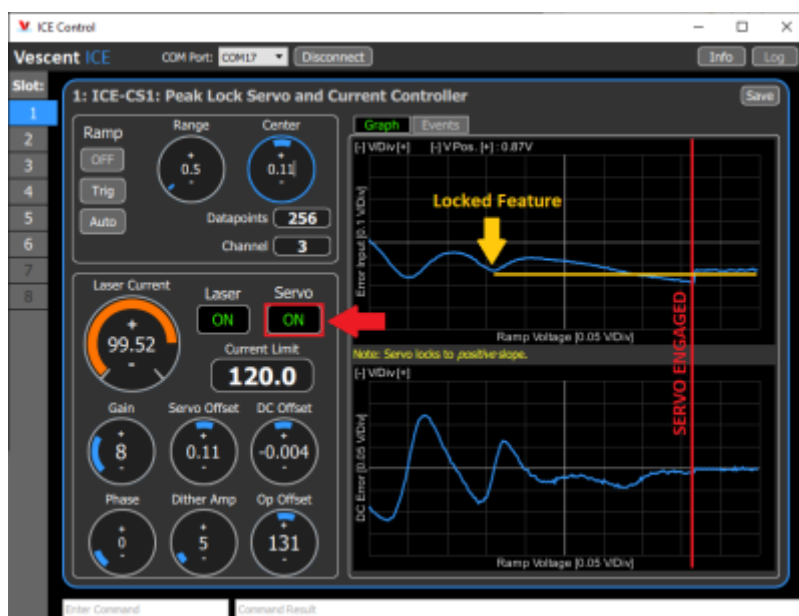


Fig. 12: TEXT

If these do not happen, it might mean that your **Op Offset** and **Gain** settings are not optimal like in [figure 13](#). To optimize these, turn your gain down as low as it will go without losing lock, and then adjust the **Op Offset** so that the signal on the bottom graph goes to zero. You may not be able to get it exact due to the digitization of that setting, but there will be a setting for which it is closest and changing up or down will flip what side of the line you are on. Once you've done this, turn **Gain** back up until the signal looks nice. Getting **Gain** to the right setting is a little difficult to do with just the ICE Box, but a good way to approximate it is to increase **Gain** until you lose lock, and then back off by ~40-50%. The optimal **Gain** setting ultimately comes down to your measurements of noise on externals such as a beat note between two lasers.



Fig. 13: TEXT

## Front Panel

The front panel can be seen in [figure 14](#). The functions and connections are as follows:

1. Power Button
2. Interchangeable ICE Cards
3. ICE Box On Board GUI Monitor
4. Rotary Knob and Button for On Board GUI Navigation
5. ICE Card Slot Indicator



Fig. 14: Front Panel of the ICE Box

## Rear Panel

The rear panel can be seen in [figure 15](#). The functions and connections are as follows:

1. DB-9 Connector for [TTL Serial Communications](#) <sup>1)</sup>
2. USB 2.0 Type-B port for Serial Communications
3. BNC Interlock
4. 5V/500mA fan connection pins
5. D-Sub Combo Power Connector



The DB-9 Connector (1) is **NOT** for powering the ICE Box. Do not confuse it with the daisy chain power system used in the D2 product line. Attempting to use this connector for power may damage your ICE Box.

Use the D-Sub Combo Power Connector (5) and the ICE-PS2 power supply as described [here](#).



Fig. 15: The Rear Panel of the ICE Box

Contact [sales \[at\] vescent \[dot\] com](mailto:sales@vescent.com) for questions and corrections, or to request added functionality.

<sup>1)</sup>

**not** compatible with RS-232

From:  
<https://www.vescent.com/manuals/> - **Product Manuals**

Permanent link:  
[https://www.vescent.com/manuals/doku.php?id=ice:ice\\_quickstart\\_guide&rev=1637704818](https://www.vescent.com/manuals/doku.php?id=ice:ice_quickstart_guide&rev=1637704818)

Last update: **2021/11/23 22:00**

