

Reconfigurable Laser Servo

Model No. D2-125

Document Revision: 4.1

Document Last Updated on 2021/08/26 14:26

Please read [Limited Warranty](#) and [General Warnings and Cautions](#) prior to operating the [D2-125 \(web page\)](#) Reconfigurable Servo.

[Quick start for D2-125.](#)
[D2-125 web page.](#)



Fig. 1: D2-125

Description

The D2-125 Reconfigurable Laser Servo contains a tunable PI^2D loop filter for tight locking to an error signal. The error signal is either an amplified version of the Error Input signal (side-lock mode) or an amplified version of a demodulated Error Input (optional peak-lock mode). In both modes, a DC Offset is summed to the error signal, allowing the user to select the zero-crossing and thus the lock point. The error signal can also be inverted via a front-panel switch. Additionally, the Laser Servo has an internal ramp generator for sweeping the output and computer control functionality to make and break lock and directly control the output voltage.

The main component in the Reconfigurable Laser Servo is the PI^2D loop filter, which means that the feedback has standard proportional (P), integral (I), and differential (D) feedback with a second integral feedback (I) providing the PI^2D transfer function. The double integration is used to boost gain at low frequencies. With integrator frequencies tunable from 2 MHz down to 10 Hz, the Laser Servo can be optimized to a wide variety of plants and servo loops. With the Peak Lock option, the Laser Servo can demodulate a provided 4 MHz dither signal to enable slope-detection for locking to signal minimas and maximas. The Laser Servo can be used to lock a laser's current or PZT to an interferometer or an optical transition. With peak-lock, the Laser Servo can perform Pound-Drever-Hall (PDH) locking to an optical cavity. The Reconfigurable Laser Servo uses basic voltage inputs and outputs. As a result, it can be used with lasers or with any voltage-tunable device with an error signal.

The Laser Servo can be unlocked by a computer (via TTL control) to jump the output voltage to a set voltage difference from the current lock point, or to a specific voltage. This feature can be used to jump the laser frequency a known distance away and then relock to the original or a new lock point frequency. This feature can be used for auto-locking or relocking routines.

The Laser Servo has an internal sweep generator to sweep the laser frequency prior to lock.

Purchase Includes

- D2-125 Laser Servo
- VPN00465 BNC cable (1ft)¹⁾
- VPN00457 Trimpot tweaker (large)
- VPN00458 Trimpot tweaker (small)
- VPN00456 DB9 Power Cable (1ft)

Options

The D2-125 can be purchased with two options:

- **-PL: Peak Lock option**
- **-IP-X: Internal Power (where X=100 VAC, 120 VAC, or 230 VAC)**

The Peak Lock option generates a 4 MHz dither signal that can be used to modulate the laser current. The amplitude and phase of this modulation can be adjusted via front panel controls. The Error Signal input will be demodulated relative to the dither signal which will generate a derivative of the input Error Signal. This derivative signal will be used to lock the laser to a minima or maxima of the input Error Signal. This is often referred to as peak-locking. If purchased with the Peak Lock option, the Laser Servo can still be used in side-lock mode. A front panel switch controls whether the D2-125-PL is in side-lock or peak-lock mode. When in side-lock mode the modulation / demodulation circuitry is disabled. **In this manual, sections that are only relevant to the Peak Lock option are printed in red.**

The Internal Power option removes the 9-pin power connect used to connect power between Vescent electronics modules and provides power entry module for powering the module via main AC lines. The input voltage, 100VAC, 120VAC or 230VAC, is specified in the option. Note, with this option, the D2-125 cannot be powered via the D2-005 Power Supply, the D2-001 break-out or from any other Vescent electronics modules. Additionally, this module will not be able to power other Vescent electronics modules; the -IP option makes the Laser Servo completely stand-alone. **In this manual, sections that are only relevant to the Internal Power option are printed in orange.**

Absolute Maximum Ratings

Note: All modules designed to be operated in laboratory environment

Parameter	Rating
Environmental Temperature	>15°C and <30°C
Environmental Humidity	<60%
Environmental Dew Points	<15°C



When connecting Servo Output to your plant, always make sure to discharge any residual voltages, for instance from a PZT.

Specifications

	Value	Units
Input and Output Impedance	50 ²⁾	Ω
Output Voltage (main and aux)	± 10	V
Input Voltage Noise ³⁾	<5	nV/ $\sqrt{\text{Hz}}$
Max Input Voltage DC Level	± 500	mV
Max Input Voltage Signal Amplitude	± 500	mV
Bandwidth ⁴⁾	>10	MHz
Proportional Gain (ref to DC Error) Proportional Gain (ref to Input Error)	-66 to +6 -40 to +32	dB
First Integrator	Off, 10 Hz, 20 Hz, 50 Hz, 100 Hz, 200 Hz, 500 Hz, 1 kHz, 2 kHz, 5 kHz, 10 kHz, 20 kHz, 50 kHz, 100 kHz, 200 kHz	
Second Integrator	Off, 100 Hz, 200 Hz, 500 Hz, 1 kHz, 2 kHz, 5 kHz, 10 kHz, 20 kHz, 50 kHz, 100 kHz, 200 kHz, 500 kHz, 1 MHz, 2 MHz	
Differential	Off, 500 Hz, 1 kHz, 2 kHz, 5 kHz, 10 kHz, 20 kHz, 50 kHz, 100 kHz, 200 kHz, 500 kHz, 1 MHz, 2 MHz, 5 MHz, 10 MHz	
Differential Gain	5 to 15	dB
Auxiliary Servo Output Gain ⁵⁾	Integral: 500 μs to 5 s	
Laser Freq. Jump		
Jump Time	<400	μs
Ramp Amplitude (Max)	± 5	V
Ramp Frequency (on main servo output) Ramp Frequency (on aux servo output)	500 50	Hz
Dither Frequency (-PL only)	4	MHz
RF Output Max Amplitude (-PL only)	± 75	mV
RF Output Impedance (-PL only) ⁶⁾	50	Ω
Ramp Centering Range	± 5	V

Inputs, Outputs, and Controls

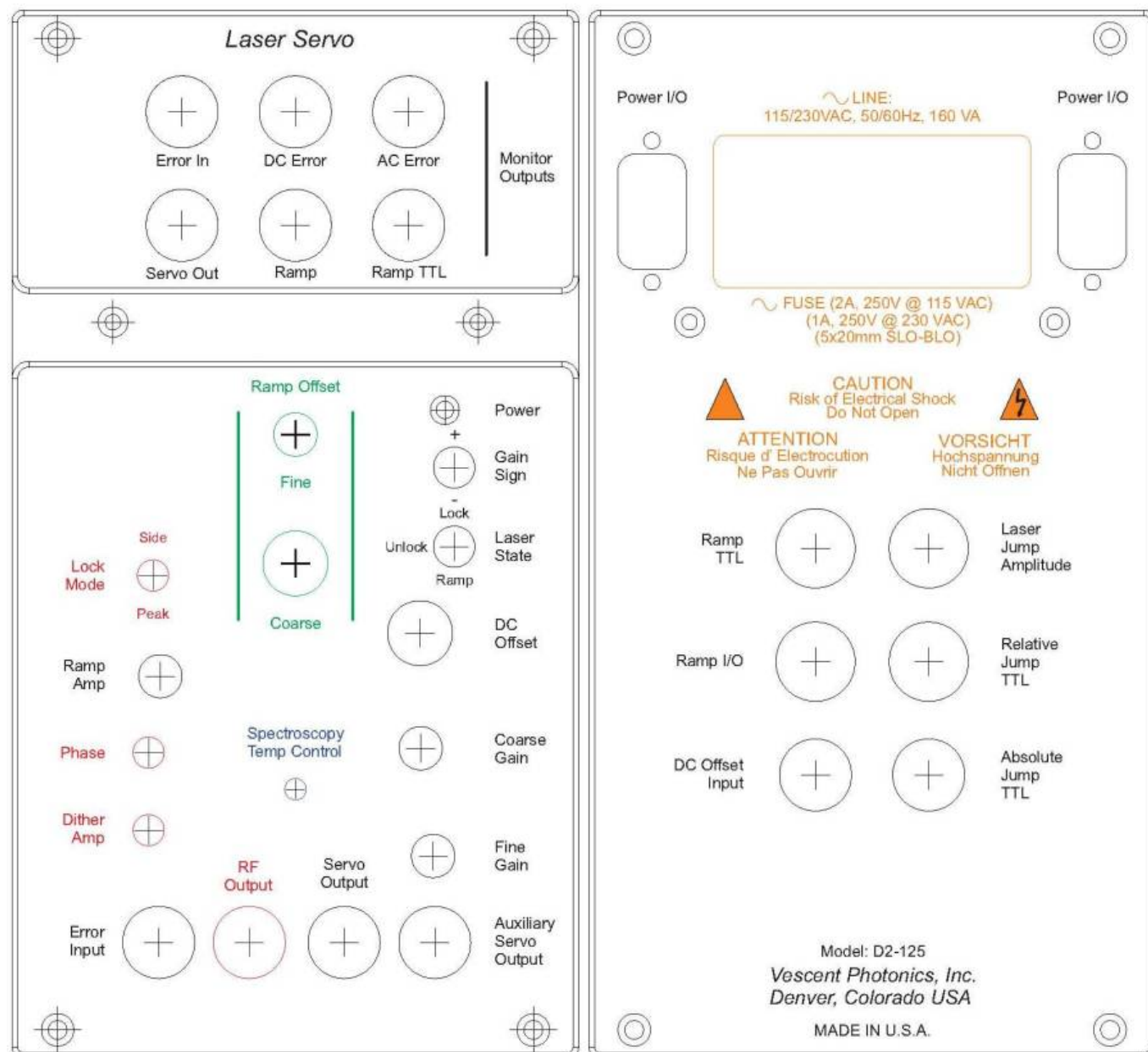


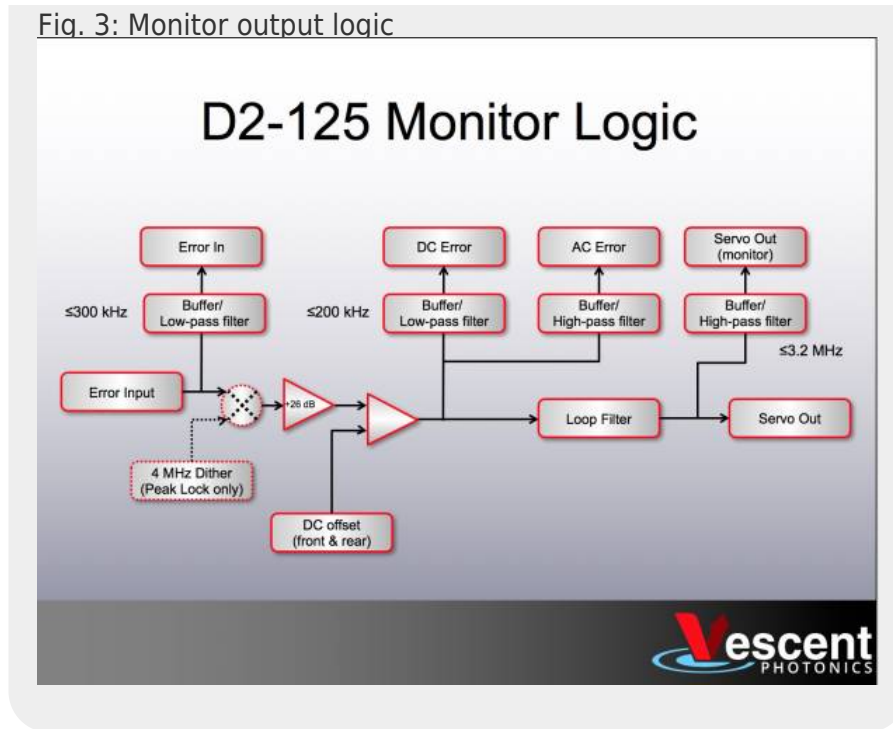
Fig. 2: Schematic drawing of the front and back panels of the D2-125

Monitor Section

Located at the top of the front panel, the monitor section contains 6 BNC outputs for monitoring various signals used by the Laser Servo. The logic of the monitors is shown in [figure 3](#). Open a [pdf of this image](#).



Fig. 3: Monitor output logic



Error In

The ERROR IN monitor is a buffered and filtered version of the ERROR INPUT. The monitor has a 300 kHz low-pass filter.

DC Error

The signal from ERROR IN (after demodulation if in PEAK LOCK mode) is amplified by 26 dB (x20). The amplified signal is summed with both the DC OFFSET as set on the front panel and the back-panel DC OFFSET INPUT. The DC ERROR is passed through a low pass filter with a roll off of 200 kHz, so that high frequency noise does not obfuscate the signal. The DC level of the DC ERROR sets the lock-point and can be adjusted with the DC OFFSET knob. When locked, the Laser Servo acts to drive the DC ERROR to zero.

AC Error

The AC ERROR monitors the same signal as the DC ERROR, except there is no low-pass filter and the signal is coupled through a high pass filter to remove DC components (< 10 Hz). It is designed for spectrum analysis and is also useful for coarse estimates of the laser line-width. The bandwidth of the AC ERROR is limited by the preceding amplifier stages to greater than 20 MHz.

Servo Out

The SERVO OUT monitors the correction signal that is fed back to the laser, SERVO OUTPUT. The signal is the output from the tunable loop filter.

Ramp Mon

The RAMP MON is a monitor for the actual ramp signal sent to the SERVO OUTPUT when the laser is in RAMP mode.

Ramp TTL

The RAMP TTL is a trigger synchronous with the ramp. It is usually used to trigger an oscilloscope while sweeping the SERVO OUTPUT. The RAMP TTL signal is also available on the back panel as a dedicated trigger output.

Front Panel

Power (LED indicator)

All electronic modules have a blue LED power indicator on the top right side of the front panel control section. The LED requires +15V and -15V in order to light.

Lock Mode (two-position switch) -PL only

When set to the PEAK LOCK position, this switch routes the ERROR IN to a FM demodulation circuit that extracts the error signal, which is then passed to the Loop Filter circuit. In the SIDE LOCK position, the demodulation circuit is bypassed and the signal is fed directly to the Loop Filter circuit. Additionally, the RF OUTPUT is disabled in SIDE LOCK.

Ramp Amp (1-turn knob)

The RAMP AMP sets the amplitude of the internal ramp generator.

Phase (25-turn trimpot) -PL only

When purchased as part of a complete laser system, the PHASE control is set at the factory and generally will not require further adjustment. The PHASE control adjusts the phase between the dither signal at RF OUTPUT and the local oscillator used to demodulate the signal coming in to ERROR INPUT. It is used to maximize the demodulated DC ERROR signal while the laser is sweeping across the desired transition(s) or lock points. The dither frequency is 4 MHz.

Dither Amp (25-turn trimpot) -PL only

The DITHER AMP control is used to set the amplitude of the dither signal at RF OUTPUT. When purchased as part of a complete laser system, it is set at the factory and generally will not require further adjustment. When used with the D2-105 Laser Controller, the RF OUTPUT should be connected to the Laser Controller's RF INPUT to modulate the laser current. The DITHER AMP can range from 0 to ± 75 mV (into a 1 M Ω load).

Error Input (BNC)

This is the input for the error signal. In SIDE LOCK mode, the signal is amplified by 26 dB and summed with the DC OFFSET and DC OFFSET INPUT (back panel). In PEAK LOCK mode, the ERROR INPUT is demodulated by the dither frequency and is then amplified by 26 dB and summed with the DC OFFSET and DC OFFSET INPUT (back panel). In both modes the amplified signal can be seen with the DC ERROR MONITOR and the AC ERROR MONITOR.

RF Output (BNC) -PL only

The RF OUTPUT signal is the 4 MHz dither or FM modulation signal. When used with the D2-105 Laser Controller, it should be connected to the RF INPUT on the Laser Controller. In SIDE LOCK mode the dither to the RF OUTPUT is turned off.

Gain Sign (two-position switch)

The GAIN SIGN reverses the sign of the signal input from ERROR INPUT and should be used if the desired lock-point has the wrong slope (loop is providing positive feedback instead of negative feedback). Switching GAIN SIGN will invert the pattern seen at DC ERROR. When triggering an O-scope with the RAMP TTL signal on a positive edge, the Laser Servo locks to a zero crossing with a positive slope.

Laser State (three-position switch)

The lock switch has three positions. The lowest is the RAMP, which connects the internal ramp to the SERVO OUTPUT causing the laser to sweep. The amplitude of the sweep is controlled with RAMP AMP knob. In the center position (UNLOCK) the ramp is disconnected and zero volts is output to SERVO OUTPUT. In the top position (LOCK) the loop filter is engaged.

DC Offset (10-turn potentiometer)

The DC OFFSET knob adds a DC offset to the DC ERROR MONITOR signal. Since the servo locks to the point where the DC ERROR MONITOR reads 0V, adjusting the DC OFFSET changes the lock point.

Coarse Gain (seven-position switch)

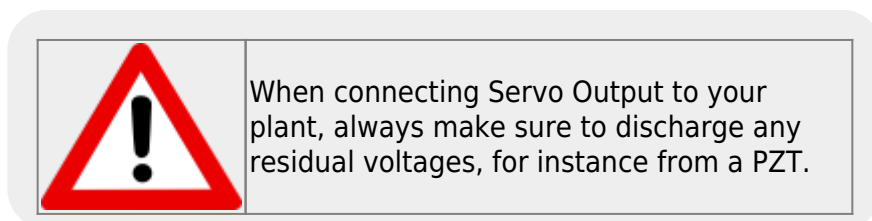
The COARSE GAIN sets the overall proportional gain of the circuit without changing the location of any corners or poles in the loop filter transfer function. Relative to the DC ERROR MONITOR, the Coarse Gain adjusts the gain from 0dB to -60dB.

The overall loop gain (controlled by both the COARSE GAIN and the FINE GAIN) should be set around the point that minimizes the RMS noise on the DC ERROR MONITOR. This can sometimes result in setting the gain too high because the DC ERROR MONITOR filters high frequencies and thus hides some of the gain peaking with high gain. To precisely set the gain, look at the noise with a spectrum analyzer through the AC ERROR MONITOR.

Fine Gain (1-turn knob)

The FINE GAIN control adjusts the proportional gain by +6 to -6 dB.

Servo Output



The SERVO OUTPUT is a voltage output to control the frequency of the laser. When the Laser Servo is used with the D2-105 Laser Controller, the SERVO OUTPUT is connected to the CURRENT SERVO INPUT on the Laser Controller. The SERVO OUTPUT is the output from the loop filter when in LOCK mode, zero volts when in UNLOCK mode, and a DC balanced triangle wave when in RAMP mode. The ramp can be shifted with respect to 0V using the ramp centering functionality.

Auxiliary Servo Output

The AUXILIARY SERVO OUTPUT is generated from integrating the SERVO OUTPUT. Its purpose is to supply a correction signal to drive the SERVO OUTPUT to zero. When used with Vescent DBR lasers and the D2-105 Laser Controller, the AUXILIARY SERVO OUTPUT can be connected to the TEMP SERVO IN to adjust the laser diode temperature to keep the feedback laser current constant. Similarly, AUXILIARY SERVO OUTPUT can drive a PZT on an external-cavity laser diode to keep the laser diode current constant. See [AUXILIARY SERVO: GAIN SIGN](#) and [AUXILIARY SERVO: GAIN](#) for information on setting the gain and gain sign of the AUXILIARY SERVO OUTPUT.

Ramp Offset

The Ramp Offset provides the user with two front-panel knobs to adjust the voltage of the center of the ramp. When the Ramp Offset is zeroed, the ramp is centered at 0 V and when the servo goes from unlock mode to lock mode, it engages the integrators starting from 0 V. The user can adjust the Ramp Offset knobs (coarse and fine) to define the center of the ramp and the initial voltage point from which the servo begins integrating. The Ramp Offset is typically set to 0 V when Servoing Vescent DBR lasers as this functionality is redundant with the current adjust knobs on the D2-105 Laser Controller. Ramp Offset is more useful when servoing PZT-based external cavity lasers where the PZT amplifier (if used) does not have an offset knob.

Ramp Offset Coarse

Coarse adjust to the center of the ramp signal and the DC Voltage output in UNLOCK mode. Range is approximately ± 5 V.

Ramp Offset Fine

Fine adjust to the center of the ramp signal and the DC Voltage output in UNLOCK mode.

Right Side Panel

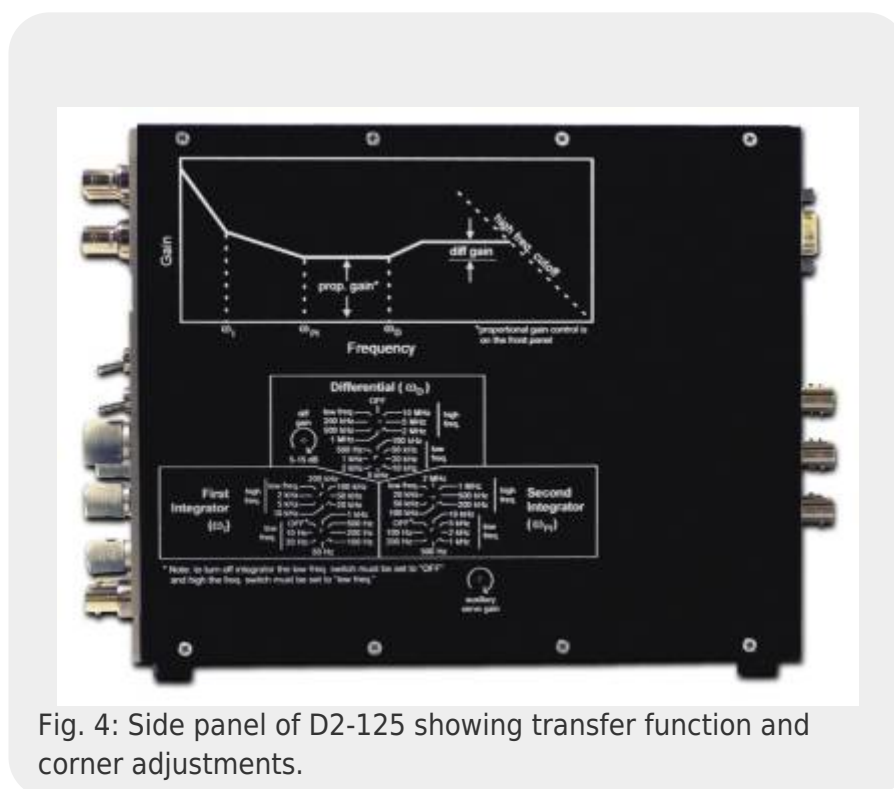


Fig. 4: Side panel of D2-125 showing transfer function and corner adjustments.

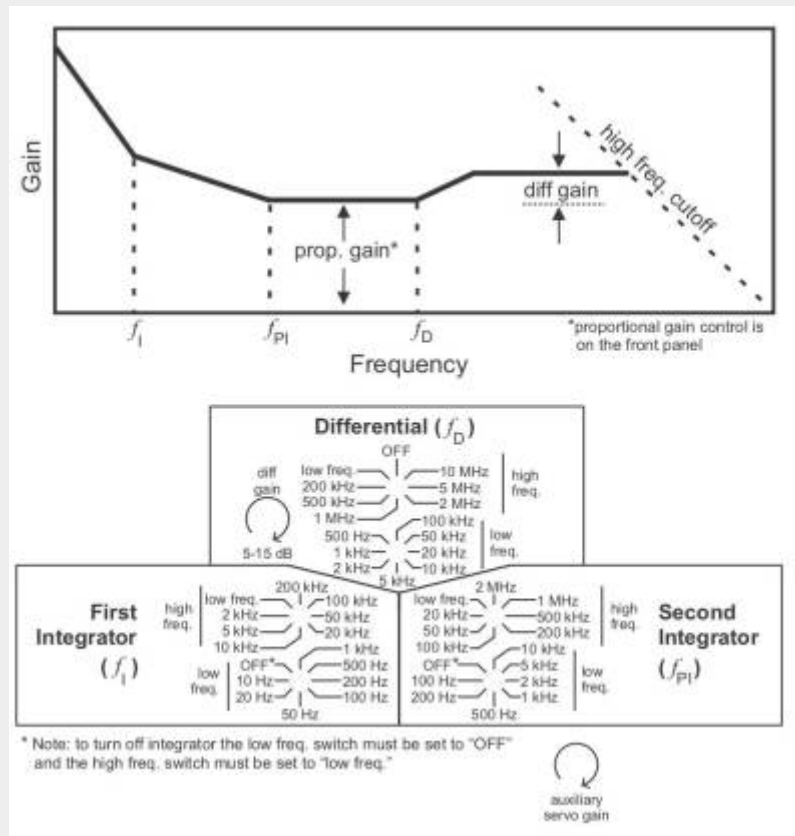


Fig. 5: Schematic of the configuration transfer function and user-controls.

The feedback loop is defined by the Gain vs Frequency plot shown above. f_i , f_{pi} and f_D define three corners in the transfer function. f_i and f_{pi} are the frequencies where the first and second integrators respectively switch from having integral gain to having proportional gain. f_D is the frequency where the gain switches from proportional to differential. f_i , f_{pi} and f_D are controlled by two rotary switches, where the upper switch is used to select higher frequencies, and the lower switch is used for selecting the lower frequencies. The upper switch must be in the "low freq" position to engage the lower switch.

NOTE: Adjusting the loop filter corners while locked may result in loss of lock. If this happens, unlock laser before adjusting poles and corners and relock laser after adjustment.

NOTE: The triangle embedded in the rounded side of each click switch points to the selected value.

First Integrator (TOP)

Sets the frequency of the first integrator (f_i). This knob only selects higher-frequency positions (2 kHz - 200 kHz). To set f_i to lower frequencies, this knob must be placed in the LOW FREQ position.

First Integrator (BOTTOM)

Sets the frequency of the first integrator (f_i). This knob only selects the lower-frequency positions (10 Hz - 1 kHz) and is only active if the FIRST INTEGRATOR (TOP) knob is in the LOW FREQ position. To turn off the integrator, this knob must be placed in the OFF position *and* the FIRST INTEGRATOR (TOP)

knob must be in the LOW FREQ position.

Second Integrator (TOP)

Sets the frequency of the second integrator (f_{pi}). This knob only selects the higher-frequency positions (20 kHz - 2 MHz). To set f_{pi} to lower frequencies, this knob must be placed in the LOW FREQ position.

First Integrator (BOTTOM)

Sets the frequency of the second integrator (f_{pi}). This knob only selects the lower-frequency positions (100 Hz - 10 kHz) and is only active if the SECOND INTEGRATOR (TOP) knob is in the LOW FREQ position. To turn off the integrator, this knob must be placed in the OFF position *and* the FIRST INTEGRATOR (TOP) knob must be in the LOW FREQ position.

Differential (TOP)

Sets the frequency of the differentiator (f_d). This knob only selects the higher-frequency positions (200 kHz - 10 MHz) and can turn off the differential by placing the switch in the OFF position. To set f_d to lower frequencies, this knob must be placed in the LOW FREQ position.

Differential (BOTTOM)

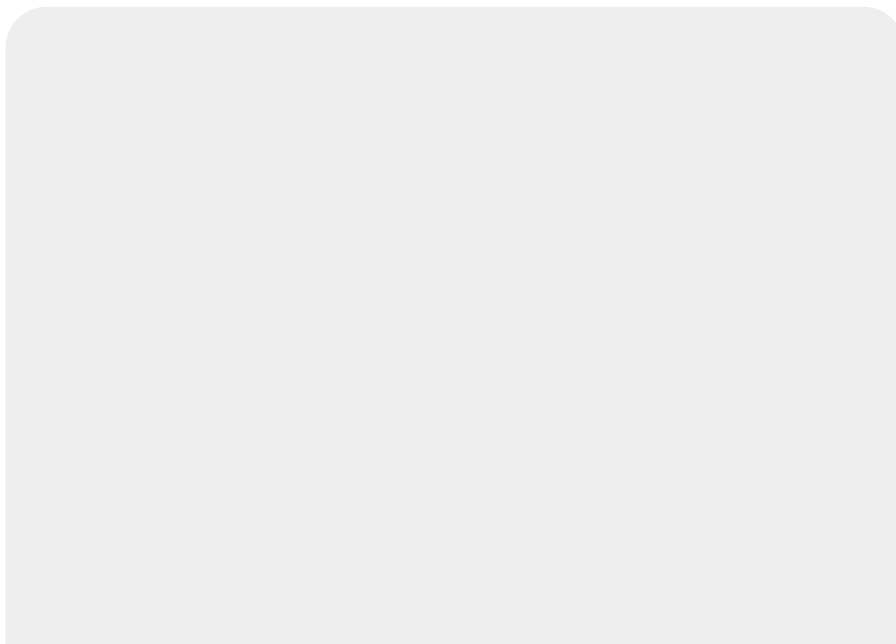
Sets the frequency of the differentiator (f_d). This knob only selects the lower-frequency positions (500 Hz - 100 kHz) and is only active if the DIFFERENTIAL (TOP) knob is in the LOW FREQ position.

Differential Gain (25-turn trimpot)

Sets the maximum differential gain. 25-turn trimpot adjusts the gain from 5db to 15dB.

Auxiliary Servo: Gain (25-turn trimpot)

This trimpot sets the gain for the AUXILIARY SERVO OUTPUT. The Aux Servo is a pure integrator and the gain ranges from 500 μ s to 5 s. Full ccw sets gain to minimum (5 s), full cw sets gain to maximum (500 μ s).



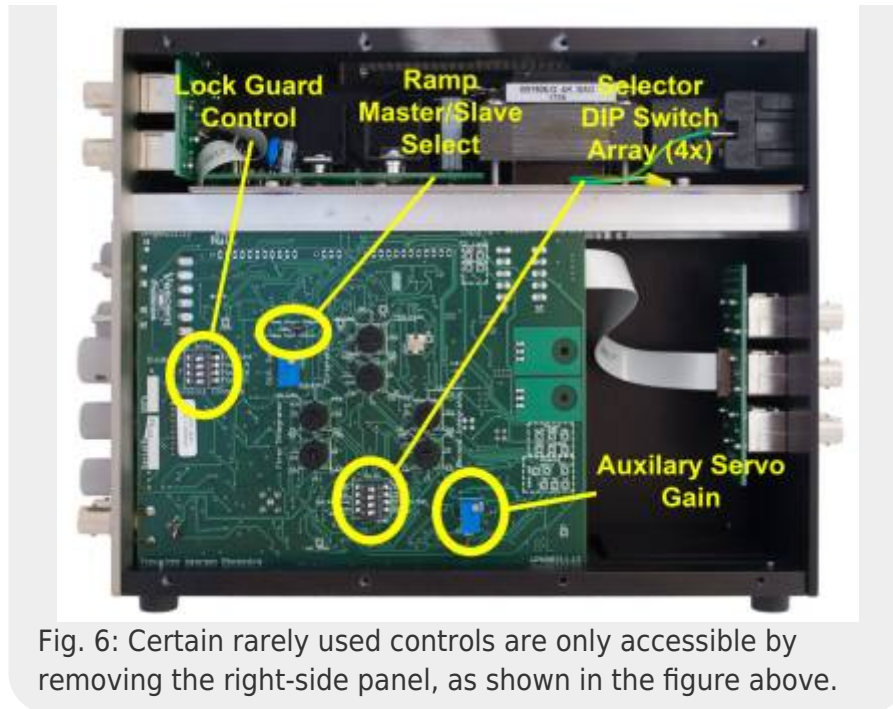


Fig. 6: Certain rarely used controls are only accessible by removing the right-side panel, as shown in the figure above.

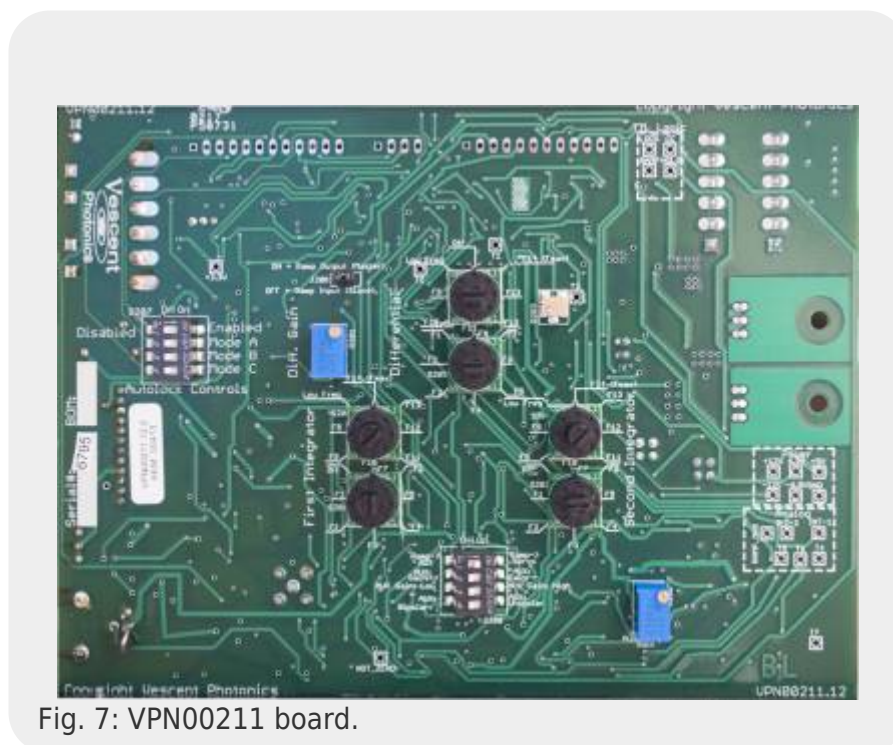


Fig. 7: VP00211 board.

Selector DIP Switch Array:

Ramp→Aux / Ramp→Servo (2-position slider switch)

This 2-position slider switch is only accessible by removing the right side panel (see above) and sets whether the ramp is applied to the SERVO OUTPUT or the AUXILIARY SERVO OUTPUT. It is factory set in the Ramp→Servo position. When the Ramp→Servo is selected, the ramp is a ~500 Hz triangle wave and when Ramp→Aux is selected the ramp is ~50 Hz. Additionally, when using The Absolute Jump TTL or the Relative Jump TTL, the output jump is placed on the same channel as gets the ramp signal. The

other signal (SERVO OUTPUT or AUXILIARY SERVO OUTPUT) is held at its current value.

Aux Gain: + / Aux Gain - (2-position switch)

This switch is only accessible by removing the right side panel (see above). This switch sets the gain sign for the AUXILIARY SERVO OUTPUT.

Aux Gain: Low / Aux Gain: High (2-position switch)

This switch is only accessible by removing the right side panel (see above). This switch sets a 40dB attenuator for the AUXILIARY SERVO OUTPUT loop gain when set to Aux Gain: Low.

Aux: Bipolar / Aux: Unipolar (2-position slider switch)

This 2-position slider switch is only accessible by removing the right side panel (see above) and sets whether the AUXILIARY OUTPUT SERVO is unipolar or bipolar. It is factory set to be bipolar so the auxiliary output can range from -12 V to +12 V. For some applications such as driving a PZT, limiting the voltage range to positive values is necessary. When this switch is in the unipolar mode, the auxiliary output ranges from -0.5 V to +12 V. Additionally, when in Ramp→Aux mode and Aux: Unipolar, the ramp is centered at ~3.5V instead of 0V.

Ramp Master / Slave (Jumper)

This jumper is only accessible by removing the right side panel (see above) and sets whether the ramp input is in master or slave mode. It is factory set to be in MASTER MODE. In SLAVE MODE (jumper off) the RAMP signal is generated externally and input through the back panel RAMP I/O port. In MASTER MODE (jumper on) the ramp is generated internally and is sent out to the RAMP I/O port for driving other D2-125 Laser Servos configured in SLAVE MODE.

Lock Guard

The Lock Guard feature on newer models (roughly post 2014) provides a relocking function that detects if the primary servo output has changed its value too quickly. If this is detected, the servo disengages the lock and reengages the lock with the servo output set to its value prior to the unlock event.

Lock Guard Controls (DIP Switch Array)

Disabled / Enabled

This 2-position slider switch is only accessible by removing the right side panel (see [figure 6](#)) and sets whether the auto-locking routine is engaged or not. When engaged, an AC-coupled ($RC \approx 10 \mu s$) window comparator monitors the SERVO OUTPUT to detect fast changes in the output. If the servo output changes too much (as set by R202 / T3, see below) the autolock routine is engaged. The autolock will set the SERVO OUTPUT to its value immediately before the detected unlock event, wait for the hold time (see below) and then re-engage the lock. If the SERVO OUTPUT jumps after this relock attempt, the relock routine will attempt a second relock again, but only after N+1 Relock Time has passed since the previous relock attempt.

Mode A,B,C

These three 2-position slider switches are only accessible by removing the right side panel (see above) and sets the Hold Time and N+1 Relock Time described above. The 3 positions, A,B,C form a binary scale factor given by the table below:

C	B	A	Hold Time	N+1 Relock Time
Off	Off	Off	60 μ s	150 μ s
Off	Off	On	125 μ s	300 μ s
Off	On	Off	250 μ s	600 μ s
Off	On	On	500 μ s	1.25 ms
On	Off	Off	1 ms	2.5 ms
On	Off	On	2 ms	5 ms
On	On	Off	4 ms	10 ms
On	On	On	8 ms	20 ms

The ideal delay used will depend on your system and loop bandwidth. Generally, a faster response and slower delay is ideal, however, sometimes the system needs time to stabilize after a large correction and these settings enable the user to adjust how long to wait to let the system stabilize before engaging the lock.

R202 (Trimpot)

The R202 trimpot sets the size of the window comparator described above. The size of the window can be measured by the voltage on T3. A smaller window means that the servo is more sensitive to unlock events and detects them quicker, however, if the window is too small the servo may detect false positives when the system remains locked but the SERVO OUTPUT is moving quickly to respond to a challenge.

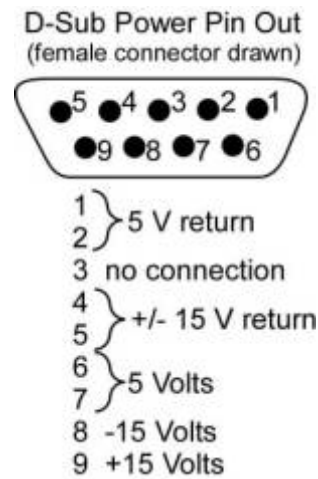
Back-panel Section

Power I/O (9-pin D-sub)



Never connect this device to a power supply that is switched on and supplying power. Always turn off the power supply, make connections to this device, and then re-energize the power supply.

The power to each electronics module is through a 9-pin D-sub connector through either a power bridge unit or a serial cable with 9-pin D-sub connectors, which is convenient when the unit must be taken out of line for access to the side panels. The pin outs are shown in the following figure:



Absolute Jump TTL (BNC)

When asserted HIGH (5V) while in LOCK mode, ABSOLUTE JUMP takes the Laser Servo out of lock and conveys the voltage on LASER JUMP AMPLITUDE to the SERVO OUTPUT. Thus, a 1 V input to LASER JUMP AMPLITUDE applies 1 V to SERVO OUTPUT. ABSOLUTE JUMP is useful when one wants to control the voltage on the integration stages of the loop filter, or for zeroing the integrators during auto-locking routines. When returned to LOW (0V), the loop filter is reengaged. Engaging or disengaging the ABSOLUTE JUMP is achieved in under 400 μ s.

When asserted HIGH (5V) while in RAMP mode, ABSOLUTE JUMP applies a DC offset equal to the LASER JUMP AMPLITUDE to the ramp signal at SERVO OUTPUT. When asserted LOW while in RAMP mode, the ramp signal is DC balanced.

When disconnected, ABSOLUTE JUMP is low.

Relative Jump TTL (BNC)

When asserted HIGH (5 V) while in LOCK mode, RELATIVE JUMP engages a sample-and-hold circuit and takes the Laser Servo out of lock. The voltage on the SERVO OUTPUT is the sample-and-hold value summed in with the LASER JUMP AMPLITUDE. For example, if the laser is locked and the SERVO OUTPUT is -200 mV, then engaging the RELATIVE JUMP and putting 300 mV on the LASER JUMP AMPLITUDE will make the SERVO OUTPUT 100 mV (-200 mV + 300 mV). This feature is useful for jumping the laser relative to its current lock point (say +200 MHz from a locked transition). When returned to LOW (0 V), the loop filter is reengaged, enabling the laser to be relocked to its original position (by setting LASER JUMP AMP to zero before returning the trigger to TTL low), or to a new lock point (by asserting the trigger low with the LASER JUMP AMP still at a non-zero value). (See [application note here](#).) Engaging or disengaging the RELATIVE JUMP is achieved in under 400 μ s.

When asserted HIGH (5V) while in RAMP mode, RELATIVE JUMP applies a DC offset equal to the LASER JUMP AMPLITUDE to the ramp signal at SERVO OUTPUT. When asserted LOW (0V) while in RAMP mode, the ramp signal is DC balanced.

When disconnected, RELATIVE JUMP is low.

Ramp TTL

Same as the front panel signal. The RAMP TTL is a trigger synchronous with the ramp. It is used to trigger an oscilloscope while sweeping the SERVO OUTPUT.

Ramp IN / OUT

The Laser Servo is shipped with the Ramp in MASTER MODE. In this configuration, the RAMP IN / OUT is an output of the maximum ramp signal, generated internally. Removing the side-panel RAMP MASTER / SLAVE jumper will put the Laser Servo in slave mode. In this configuration, RAMP IN / OUT is an input of an external ramp signal. When the LASER STATE is in RAMP MODE, the SERVO OUTPUT is an attenuated version of the input to RAMP IN / OUT. The attenuation is controlled by the RAMP AMP knob. If controlling multiple lasers with multiple D2-125's to sync the ramps, one D2-125 must be in master mode and the rest in slave mode with all the RAMP IN / OUT signals connected. In this way each laser will sweep off a synced signal and only one oscilloscope trigger is needed for all the lasers.

The Ramp I/O has a bandwidth of roughly 50 kHz.

DC Offset Input

This signal is attenuated by a factor of 10 and summed into the DC ERROR. Inputting a square wave into the DC OFFSET INPUT jumps the laser lock point and can be used to measure the closed-loop transfer function of the laser system. It has a bandwidth of about 300 kHz (-3 dB point). The maximum voltage at this input should be no more than ± 10 V (± 1 V of DC offset).

Laser Jump Amp (BNC)

The LASER JUMP AMPLITUDE is an analog signal that is used to jump the frequency of the diode laser. See preceding sections on RELATIVE JUMP and ABSOLUTE JUMP for a full explanation.

Laser Lock Troubleshooting

Most laser locking problems can be attributed to the following:

- **Gain set too high (or too low).** Reduce the coarse and fine gain all the way and try locking. Increase the coarse gain by one click at a time.
- **Gain sign wrong** (trying to lock to the wrong slope).
 - Make sure the oscilloscope is triggering to positive slope⁷⁾.
 - Make sure oscilloscope is not in inverting mode.
 - Make sure your desired lock-point has a positive slope.
 - If all else fails, flip the gain sign and try again.

Note: sometimes the laser will lock even if the slope is wrong because there are legitimate lock-points nearby. This can fool you into thinking you are locking to the proper spot.

- **DC OFFSET not adjusted properly.**
 - When monitoring DC ERROR make sure you are not AC coupled on the oscilloscope!
 - When locking to spectroscopy, ramping fast through the transition can change the DC value on the scope (due to atom transit time through laser beam coupling to optical pumping rates). Reduce RAMP AMP towards zero on the desired transition until the DC value is not affected. Adjust DC OFFSET if necessary.
- **Loop Filter Too Fast.** Try turning off the differential feedback and only use one integrator. Then try slowing down your integrator. If you get a lock, you can then put back double integration and the differential feedback.
- **The ramp center is not located at the center of the oscilloscope.** When adjusting the RAMP AMP, the oscilloscope signal will expand and contract about a single point. That "breathing point" should be centered in the middle of the oscilloscope and can be adjusted by

changing the trigger delay of the oscilloscope. When set properly, if the oscilloscope is centered exactly on an atomic transition or other feature, then that feature will remain centered on the oscilloscope even when the RAMP AMP is turned all the way up or down.

- **Magnetic fields are interfering with the spectroscopy signal.** If the servo is used with a spectroscopy module (D2-110), magnetic fields can make locking difficult. When locking to spectroscopy, even though the spectrum might look okay, strong magnetic fields can affect the transfer function of the spectroscopy error signal in a negative way, making locking difficult. If using the D2-110 Spectroscopy Module and a D2-100 laser, make sure the laser module is at least three inches away from the spectroscopy module. In some cases, strong magnetic fields can emanate from the optics table (if magnetic clamps are in use).

If you are having problems locking the laser, it is a good idea to not use the AUXILIARY SERVO OUTPUT as this complicates the system. Once you get the locking to work properly, you can reconnect this cable.

[figure 8](#) shows and [table 1](#) lists the nominal corner settings for locking the Vescent D2-100 (or a Photodigm TOSA) to atomic spectroscopy. If all else fails, return to these setting, turn down the gain and try again.

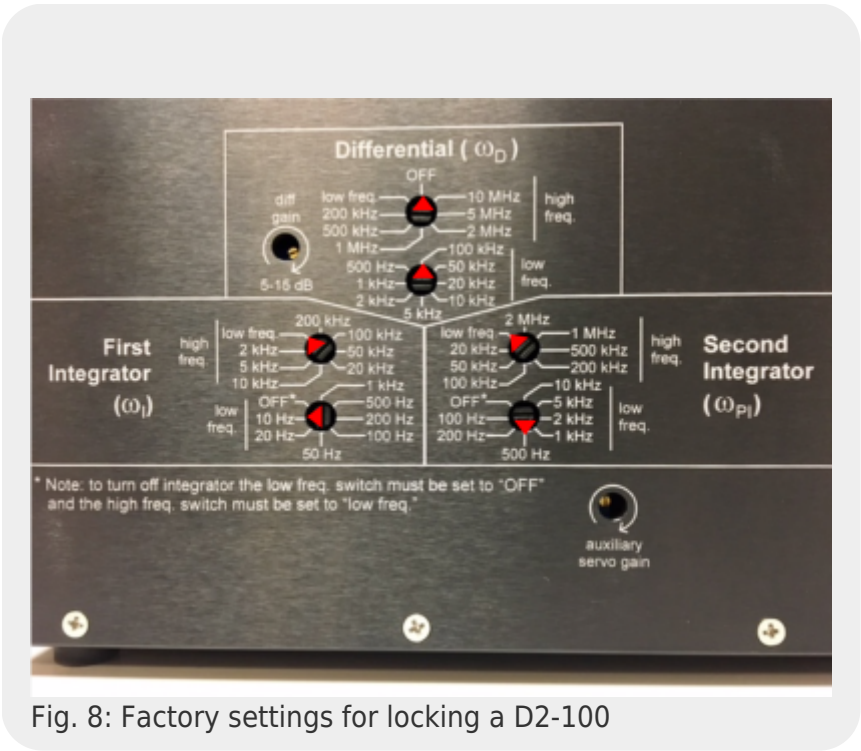


Fig. 8: Factory settings for locking a D2-100

Corner	Value	Units
First Integrator (high freq.)	low freq.	
First Integrator (low freq.)	10	Hz
Second Integrator (high freq.)	low freq.	
Second Integrator (low freq.)	500	Hz
Differential (high freq.)	OFF	
Differential (low freq.)	100	kHz

Tab. 1: D2-125 locking D2-100 or TOSA

D2-125 Stand-alone Test

It is possible to “lock the D2-125 to itself” as a self-test. Under the following conditions, the D2-125 should behave as described. Depending on your observations, contact [Vescent technical support](#) and discuss the performance.

1. Switch to Side Lock Mode
2. Set Ramp to Servo (not Aux)
3. Disconnect the 125 from all input and output
4. Connect the Servo Output to the Error Input
5. Set Gain to about the middle of the course range
6. Set the Ramp Center to the middle of its range
7. Set Ramp Amp to max
8. Set DC Offset to center of its range
9. What voltage do you see on the Servo Out Monitor (into 1 M Ω impedance)
 1. In Ramp mode?
 1. Should be a ± 9 -10V triangle wave at 500 Hz
 2. In Unlock mode?
 1. Should be 0 V (Could be offset by the Ramp Center)
 3. In Lock mode?
 1. Should be 0 V (Could be offset by either the Ramp Center or DC Offset)
10. If D2-125 rails, return to Unlock mode, switch the Gain Sign from + to - (or vice versa) and retry
11. In Lock mode, turn up gain. At some point, the Servo Out should oscillate at something close to 10 MHz, depending on the specific corner settings of the PI²D loop

1)

quantity 2 when *PL* option ordered

2)

~500 Ω input impedance for negative gain

3)

Referenced to 50 Ω load

4)

Oscillation frequency when Laser Servo locked to itself in proportional mode.

5)

Gain referenced to Primary Servo Output.

6)

Into a 1 M Ω load

7)

It is not necessary to trigger the oscilloscope to a positive slope, however, switching the trigger slope will change whether the servo locks to a positive slope (positive slope trigger on oscilloscope) or negative slope (negative slope trigger on oscilloscope)

From:

<https://www.vescent.com/manuals/> - **Product Manuals**

Permanent link:

https://www.vescent.com/manuals/doku.php?id=d2:laser_servo&rev=1567034730

Last update: **2021/08/26 14:26**

